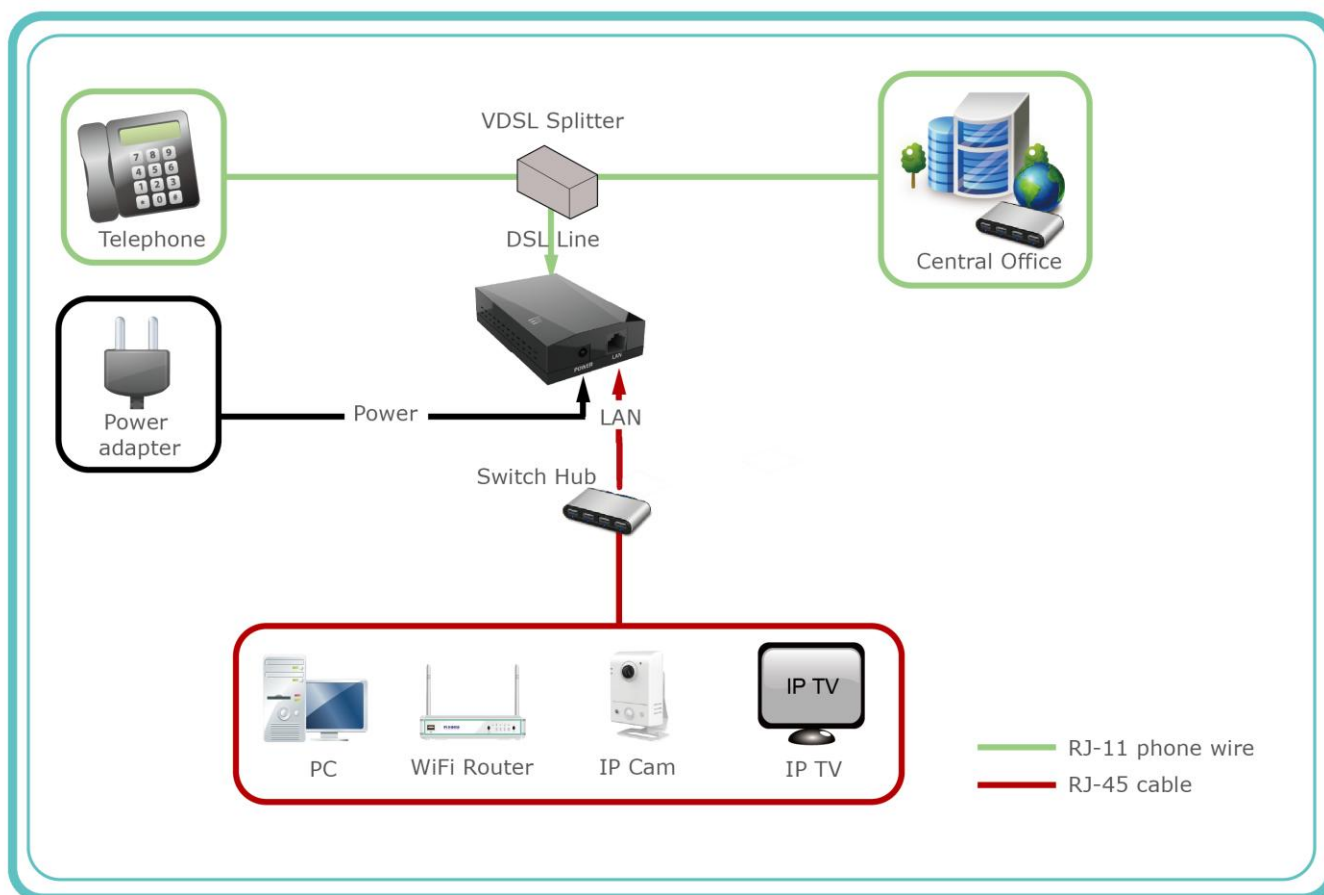




VDM111 is a VDSL2 Bridge Modem. It fully complies with the ITU-T standards for VDSL2 and provides Internet connectivity through Ethernet RJ-45 connection.

VDM111 is a cost-efficient design and it can easily upgrade ADSL to VDSL service at a very minimal cost. The idea, Plug & Play without any installation, is not only to simplify the installation complexity, but also to save the installation cost.

Application Diagram



Specification

Hardware Interface

VDSL	1 x RJ-11 VDSL connector
Ethernet	1 x RJ-45 Ethernet connector
Power	1 x DC Power Jack

VDSL

Standard	VDSL2 standard ITU-T G.993.2
Profiles	8a, 8b, 8c, 8d, 12a, 12b, 17a, 30a
Data Rate	Up to 100Mbps upstream / 100Mbps downstream
Band-Plans	Conforms to NA, EUR & Swedish band-plans
Parameter Configurability	ITU-T 997.1 Compliant

Ethernet

Standard	IEEE 802.3x standards
10/100Mbps	Auto selection
MDI/MDI-X	Auto

Features

QoS	Flexible packet sorting based on EtherType, VLAN ID or VLAN priority
-----	--

Appearance

Dimension (L x W x H)	102mm x 67mm x 26mm
Weight (g) Total Net	86g

Operation Environment

Operation Temperature	0°C ~ 40°C
Operation Humidity	10%~90% (non-condensing)

Storage Environment

Storage Temperature	-20°C ~ 65°C
Storage Humidity	10%~90% (non-condensing)

Certification

Certification	CE / FCC
---------------	----------

Other

Power Adaptor	DC 5V/1A
---------------	----------

※Product specifications are subject to change without prior notice.

PIXORD Corporation

Address: 6F, No.12, Innovation 1st Rd., Hsinchu Science Park, Hsinchu 30076, Taiwan

Tel: +886-3-5678818 Fax: +886-3-5678990 Mail: marketing@pixord.com